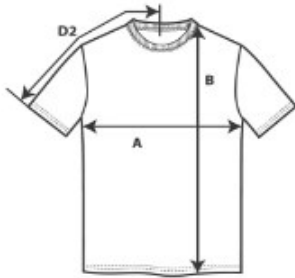


T-SHIRT SIZE GUIDE



S

(A) Chest: 46cm

(B) Length from HPS: 71cm

(D2) Sleeve length (centre back): 40cm

M

(A) Chest: 51cm

(B) Length from HPS: 74cm

(D2) Sleeve length (centre back): 43cm

L

(A) Chest: 56cm

(B) Length from HPS: 76cm

(D2) Sleeve length (centre back): 47cm

XL

(A) Chest: 61cm

(B) Length from HPS: 79cm

(D2) Sleeve length (centre back): 51cm

XXL

(A) Chest: 66cm

(B) Length from HPS: 81cm

(D2) Sleeve length (centre back): 55cm

*Measurements may vary by a few millimetres.